

Involvement of brain ketone bodies and the noradrenergic pathway in diabetic hyperphagia in rats

Kinuyo Iwata · Mika Kinoshita · Shunji Yamada ·
Takuya Imamura · Yoshihisa Uenoyama ·
Hiroko Tsukamura · Kei-ichiro Maeda

Received: 6 October 2010 / Accepted: 5 December 2010 / Published online: 15 January 2011
© The Physiological Society of Japan and Springer 2011

Abstract Uncontrolled type 1 diabetes leads to hyperphagia and severe ketosis. This study was conducted to test the hypothesis that ketone bodies act on the hindbrain as a starvation signal to induce diabetic hyperphagia. Injection of an inhibitor of monocarboxylate transporter 1, a ketone body transporter, into the fourth ventricle normalized the increase in food intake in streptozotocin (STZ)-induced diabetic rats. Blockade of catecholamine synthesis in the hypothalamic paraventricular nucleus (PVN) also restored food intake to normal levels in diabetic animals. On the other hand, hindbrain injection of the ketone body induced feeding, hyperglycemia, and fatty acid mobilization via increased sympathetic activity and also norepinephrine release in the PVN. This result provides evidence that hyperphagia in STZ-induced type 1 diabetes is signaled by a ketone body sensed in the hindbrain, and mediated by noradrenergic inputs to the PVN.

Keywords Feeding regulation · Ketosis ·
Monocarboxylate transporter 1 · Energy sensing ·
Paraventricular nucleus

Introduction

Diabetic hyperphagia is one of the classical symptoms of type 1 diabetes, and the pathogenesis has been intensively studied for many years [1]. Food intake is regulated by central and peripheral signals, including neurotransmitters, hormones, and energy substrates [2, 3]. It has been suggested insulin and leptin are important peripheral signals controlling food intake, and plasma concentrations of both hormones are low in type 1 diabetes. Receptors for both insulin and leptin exist in the hypothalamus, and are associated with regulation of food intake [4, 5], and injection of either insulin or leptin into the brain attenuated diabetic hyperphagia [6, 7]. Therefore, insulin and leptin have been regarded as peripheral signals related to diabetic hyperphagia.

Energy substrates, in addition to providing an energy source, also act as signals regulating food intake. A decrease in blood glucose levels stimulates food intake in rats and mice [8, 9]. Glucose sensing has also been reported to be related to diabetic hyperphagia [10, 11]. For instance, 48-h fasting increased mRNA levels of hypothalamic orexigenic peptides, for example agouti-related protein (Agrp) and neuropeptide Y (NPY) in streptozotocin (STZ)-induced diabetic rats with insulin and leptin deficiency [11]. Blood glucose levels are believed to be sensed by brain energy sensors that may be located within the hypothalamus and brainstem [8, 9, 12, 13]. These brain energy sensors might be specialized neurons that respond to changes in local extracellular glucose levels to control food intake [14–16]. Ependymocytes in the hypothalamus and brainstem also have the capacity to sense blood glucose levels [17–21].

The ketone body is an energy substrate that is overproduced by fatty acid oxidation to serve as an alternative

K. Iwata · M. Kinoshita · S. Yamada · Y. Uenoyama ·
H. Tsukamura · K. Maeda (✉)
Laboratory for Reproductive Science, Graduate School
of Bioagricultural Sciences, Nagoya University,
Furo-cho, Chikusa-ku, Nagoya 464-8601, Japan
e-mail: kei_maeda@nagoya-u.jp

T. Imamura
Laboratory for Biodiversity, Global COE Program, Graduate
School of Science, Kyoto University, Kyoto 606-8502, Japan

energy source of glucose during malnutrition. Ketone bodies are thought to suppress hunger, because previous studies have demonstrated that peripheral injection of 3-hydroxybutyrate (3HB) reduced food intake by improving energy metabolism [22–24]. On the other hand, the notion that ketone bodies provide a satiety signal might be inconsistent with some pathophysiologic conditions, because 72-h fasting increases plasma ketone body levels and mRNA expression of orexigenic peptide genes in the hypothalamus [25, 26], and reduces mRNA expression of gut cholecystokinin, an anorexigenic peptide [27].

Uncontrolled type 1 diabetes causes severe ketosis and hyperphagia [28–30]. Overproduced ketone bodies, therefore, may contribute to a pathogenesis of diabetic hyperphagia. Hypothalamic neuronal cell line shows a dose-dependent increase in in-vitro expression of *Agrp*, an orexigenic peptide, when the cells are exposed to 3HB [31]. In this study, we examined the potential function of ketone bodies as a hunger signal to stimulate food intake under severe diabetic conditions.

Materials and methods

Animals

Male 7-week-old Wistar–Imamichi strain rats were obtained from the Institute for Animal Reproduction (Ibaraki, Japan) and were housed in a controlled (14 h light/10 h darkness, 5:00 h lights on) environment with free access to food and water. All surgical procedures were performed under isoflurane anesthesia and aseptic conditions. Blood collection, drug injection through brain cannula, and microdialysis were performed on freely moving conscious animals. The study was approved by the Committee on Animal Experiments of the Graduate School of Bioagricultural Sciences, Nagoya University.

Brain surgery

A guide cannula for fourth ventricle (4V) injection (23G; Plastic One, Roanoke, VA, USA) or for paraventricular nucleus (PVN) microdialysis (0.5 mm outer diameter, AG-12; Eicom, Kyoto, Japan) was stereotaxically implanted 1 week before each experiment. Stereotaxic coordinates for the PVN and 4V cannulas were determined according to a rat brain atlas [32]. The coordinates were 1.9 mm posterior and 7.6 mm ventral to the bregma and 0.5 mm lateral to midline for the PVN and 12.5 mm posterior and 8.0 mm ventral to the bregma at midline for the 4V.

At the end of the experiment, the same amount of 3% brilliant blue as in the experiments was used to infuse the PVN and 4V to verify cannula placement in the animals.

The location of the 4V cannula was verified by visual inspection. The animals with the PVN cannula were perfused with saline, followed by 10% formalin under deep anesthesia. Coronal sections of the brain (50 μ m) were stained with thionin, and PVN cannula placement was verified under a microscope.

Effect of a monocarboxylate transporter 1 inhibitor on STZ-induced diabetic hyperphagia

Diabetic rats were produced by a single intravenous (i.v.) injection of STZ (Sigma, St Louis, MO, USA) at 65 mg/kg body weight in 0.01 M citrate buffer (pH 4.5) through an indwelling atrial cannula (silicone rubber tubing: i.d., 0.5 mm; o.d., 1.0 mm; Shin-Etsu Polymer, Tokyo, Japan) that had been inserted a day before STZ treatment through the right jugular vein. Non-diabetic control animals received only the citrate buffer. Blood samples (150 μ l) were collected daily at 10:00 h for 6 days through an indwelling atrial cannula to determine plasma concentrations of glucose and ketone body. STZ was administered 1 week after implanting the brain cannula into the 4V. *p*-Chloromercuribenzenesulfonic acid (pCMBS; Toronto Research Chemicals, ON, Canada), an inhibitor of monocarboxylate transporter 1 (MCT1), a ketone body transporter [33, 34], was injected into the 4V of STZ-induced diabetic rats (5 or 10 nmol/2 μ l in ultrapure water at a flow rate of 0.5 μ l/min for 4 min) at 10:30 h 8 days after the STZ injection to determine whether diabetic hyperphagia is caused by MCT1-mediated uptake of overproduced ketone bodies. Food intake was measured, and blood samples were obtained after drug treatment for 24 h. Vehicle-treated controls received a 4V injection with ultrapure water.

No apparent behavioral disorder was found after 4V pCMBS injection in diabetic and non-diabetic rats, suggesting that the drug did not have a non-specific effect on normal neuronal functions.

MCT1 detection by immunohistochemistry and RT-PCR

Intact male rats were deeply anesthetized with sodium pentobarbital and perfused with 4% paraformaldehyde. Coronal brain sections (50 μ m) were incubated with a mixture of the chicken polyclonal antibody to MCT1 (AB1286; Chemicon, Temecula, CA, USA) and mouse monoclonal antibody to vimentin (MAB1633; Chemicon) for 4 days at 4°C, followed by FITC-conjugated rabbit anti-chicken IgY (303-095-003; Jackson, West Grove, PA, USA) and Alexa Fluor 594-conjugated donkey anti-mouse IgG (A21203; Molecular Probes, Eugene, OR, USA) for 2 h at room temperature. Cell nuclei were visualized using 4,6-diamidino-2-phenylindole (Sigma). Fluorescence images

were obtained by use of an Apotome microscope (Carl Zeiss, Oberkochen, Germany).

Total RNAs were extracted from the tissue containing the wall of the 4V in intact male rats ($n = 3$). cDNAs synthesized with the High Capacity cDNA Archive kit (Applied Biosystems, Foster City, CA, USA) were amplified by PCR. All primer sequences are listed in Table 1. MCT1 is a protein encoded by the solute carrier family 16, member 1 (*Slc16a1*) gene. RT-PCR for the mRNA was performed under the following conditions: 95°C for 5 min, 30 cycles of 94°C for 30 s, 60°C for 1 min, and 72°C for 1 min, using Amplitaq Gold polymerase (Applied Biosystems).

Correlation of energy substrate concentrations between cerebrospinal fluid and blood

Cerebrospinal fluid (CSF) was collected from diabetic animals and non-diabetic controls by suboccipital puncture in the cisterna magna under anesthesia to determine the correlation of energy substrate levels between CSF and blood. CSF (20–30 µl) and blood (150 µl) were collected 7 or 8 days after STZ treatment.

CSF levels of glucose (Glucose C-Test; Wako, Osaka, Japan), 3HB (Sanwa, Nagoya, Japan), and non-esterified fatty acids (NEFA, NEFA C-test; Wako) were determined with commercial kits as described previously [35, 36].

Involvement of catecholaminergic inputs to the PVN in mediating diabetic hyperphagia

Some diabetic rats were implanted with paraffin pellets (0.66 mm in diameter; 3 mm in length) containing alpha-methyl-*p*-tyrosine (AMPT, a catecholamine synthesis inhibitor; 1.22 ± 0.06 mg/pellet; Sigma) into the dorsal

edge of the bilateral PVN 8 days after STZ treatment, because catecholaminergic inputs to the nucleus have been reported to be involved in the induction of food intake [37, 38]. Controls were implanted with paraffin pellets without AMPT. Daily food intake was measured with an automatic feeding monitor (BioDAQ; Research Diets, NJ, USA). Body weight was measured daily at 10:00 h. Blood samples (150 µl) were collected through an indwelling atrial cannula at 1, 3, and 6 days after AMPT implantation at 10:00 h to determine plasma concentrations of glucose, 3HB, and NEFA. Plasma energy substrates were determined as described in detail above.

Effect of MCT1 inhibitor administration into the 4V on orexigenic peptide mRNA expression in the hypothalamic arcuate nucleus

pCMBS (10 nmol/2 µl in ultrapure water at a flow rate of 0.5 µl/min for 4 min), an MCT1 inhibitor, was injected into the 4V, 8 days after STZ or vehicle (citrate buffer) treatment, at 10:30 h, to determine mRNA expression of arcuate nucleus (ARC) orexigenic peptides after injection of the MCT1 inhibitor. Hypothalamic ARC-median eminence (ME) tissues were dissected from the brain, by use of a microknife, 3 h after pCMBS injection into the 4V. Total RNA was extracted from the brain tissues containing the ARC and ME. Vehicle-treated controls were injected with ultrapure water.

Total RNA was extracted from the brain tissues. cDNAs were synthesized as described above. RNase-treated cDNAs were processed by real-time PCR using TaqMan universal PCR Master Mix (Applied Biosystems) in an ABI Prism 7500 Real Time PCR System. We used *Actb* as the invariant control. *Agrp* encodes *Agrp*. *Npy* encodes NPY. All primer sequences are described in Table 1.

Table 1 Primers used in this study

| Peptide | Gene | Oligonucleotide primer sequences (5' → 3') | |
|----------------------|--------------------------------------|--|---------------------------|
| | | Forward | Reverse |
| RT-PCR | | | |
| MCT1 | <i>Slc 16a1</i> | TCTGGCTGTGGCTTGATTGCAGCTT | GACTGACAGCTTTTCTCCTTTGGGA |
| Actb | <i>Actb</i> | TGTCACCAACTGGGACGATA | GGGGTGTGAAGGTCTCAAA |
| Real-time PCR | | | |
| Npy | <i>Npy</i> | CCATGTGGTGATGGGAAATG | CAACGACAACAAGGGCCCTGG |
| Agrp | <i>Agrp</i> | TTGGCAGAGGTGCTAGATCCA | AGGACTCGTGCAGCCTTACAC |
| Actb | <i>Actb</i> | ATGTGCTGCCTGACGGTCAG | GGAAGGCTGGAAGAGAGCCT |
| | Probe (5' → 3') | | |
| Npy | FAM-GTGCCACCACCAGGCTGGATTCC-TAMRA | | |
| Agrp | FAM-CGAGTCTCGTTCTCCGCGTCGC-TAMRA | | |
| Actb | HEX-CATCACTATCGGCAATGAGCGGTTCC-TAMRA | | |

Effects of 3HB injection into the 4V on food intake

3HB (DL- β -hydroxybutyric acid sodium salt) was injected (8 or 16 $\mu\text{mol}/2 \mu\text{l}$ in artificial CSF at 1 $\mu\text{l}/\text{min}$ for 2 min; Sigma) into the 4V at 13:00 h in intact male rats. Food intake was measured 3 h after 3HB injection. For vehicle-treated controls artificial CSF was injected into the 4V. pCMBS (0.01, 0.1, or 1 $\mu\text{mol}/2 \mu\text{l}$ in ultrapure water at a flow rate of 1 $\mu\text{l}/\text{min}$) was injected into the 4V just before 3HB injection.

Effects of 3HB injection into the 4V on norepinephrine release in the PVN, with microdialysis, and orexigenic peptide expression in the ARC

Norepinephrine (NE) release in the PVN induced by injecting ketone bodies into the 4V was determined by microdialysis and high-performance liquid chromatography with electrochemical detection (HPLC–ECD) in intact male rats. A microdialysis probe (50 kDa cutoff, 2 mm in length, 0.22 mm outer diameter; A-I-12-02; Eicom) was inserted into the PVN through the guide cannula 2 h before microdialysate collection. The PVN was perfused continuously with Ringer's solution (147 mM NaCl, 4 mM KCl, and 2.3 mM CaCl_2) using a microinfusion pump (ESP-64; Eicom) at 1 $\mu\text{l}/\text{min}$. Microdialysate was collected into tubes, on ice, containing 5 μl 0.02 M HCl every 20 min for 5 h starting at 11:00 h. 3HB (16 $\mu\text{mol}/2 \mu\text{l}$ in artificial CSF) was injected into the 4V at 1 $\mu\text{l}/\text{min}$ for 2 min, starting at 13:00 h.

The HPLC system consisted of a reverse-phase column (Eicom Eicompact CA-5ODS; outer diameter 2.1 mm, length 150 mm) and an ECD (Eicom) used at an oxidation potential of +450 mV. The mobile phase for microdialysis samples was 0.1 M phosphate buffer (pH 6.0) containing EDTA-2Na (50 mg/l), sodium 1-octanesulfonate (400 mg/l), and 5% methanol. The least detectable NE level in the microdialysate was 1.25 pg, and the intra and inter-assay coefficients of variation (CVs) were 5.6 and 7.4%, respectively.

Hypothalamic ARC tissues were collected 3 h after 3HB injection at 13:00 h into the 4V. Tissues were collected and processed for real-time PCR for *Agrp* and *Npy* as described above.

Energy substrate mobilization by 4V or i.v. 3HB injection

3HB (16 $\mu\text{mol}/2 \mu\text{l}$ in artificial CSF) was injected at 1 $\mu\text{l}/\text{min}$ for 2 min into the 4V of intact male rats. Blood samples were collected at 12 and 30-min intervals during the first and last 2 h of the sampling period, respectively, through an indwelling atrial cannula, to determine changes in plasma levels of glucose, 3HB, and NEFA. For measurement of

plasma NE and epinephrine levels, blood samples were obtained every 12 min after 3HB injection into the 4V. NE and epinephrine levels were determined as described in detail above. Catecholamines in plasma samples (100 μl) were absorbed on to 30 mg activated alumina, and eluted with 70 μl 4% acetic acid containing 0.1 mM EDTA-2Na. The least detectable level of plasma NE and epinephrine (E) was 12.5 pg, intra-assay CVs were 7.0% (NE) and 9.0% (E), and inter-assay CVs were 27.3% (NE) and 10.0% (E), respectively.

To elucidate whether or not the 3HB injected into the 4V stimulates feeding by a central action or a peripheral action, because of leakage into the circulation, 3HB was administered intravenously at the highest dose which was injected into the 4V (16 μmol in artificial CSF) at 13:00 h. Vehicle-treated controls were injected with artificial CSF. Energy substrates were determined as described above in detail.

Statistical analysis

All data are reported as means \pm SEM. Statistical differences in food intake and plasma glucose among groups (Fig. 1) were analyzed by two-way ANOVA (STZ and pCMBS treatments) followed by the Bonferroni test. Statistical differences in food intake, body weight, plasma glucose, 3HB, and NEFA (Fig. 4a–e) among groups were determined by two-way ANOVA (treatment and time), followed by the Bonferroni test. Statistical differences in mRNA levels of *Agrp* and *Npy* (Fig. 4g) were analyzed by two-way ANOVA (STZ and pCMBS treatments) followed by the Bonferroni test. Statistical differences in food intake (Fig. 5) were determined by Fischer's PLSD test after one-way ANOVA. Statistical differences in PVN NE release (Fig. 6a) and plasma glucose, 3HB, NEFA, NE, and epinephrine (Fig. 7) were analyzed by two-way ANOVA (treatment and time), followed by the Bonferroni test. Statistical differences in mRNA levels of *Agrp* and *Npy* (Fig. 6c) between groups were determined by use of the unpaired Student *t* test.

Results

Diabetic hyperphagia was normalized by inhibiting ketone body transport in rat hindbrain

STZ-induced diabetic rats exhibited hyperphagia (Fig. 1a). Injection of pCMBS, a ketone transporter inhibitor, into the 4V reduced the increased food intake in diabetic rats to non-diabetic levels (Fig. 1a). pCMBS had no effect on food intake in non-diabetic control rats. On the other hand, plasma glucose levels remained at a high level even after pCMBS administration (Fig. 1b).

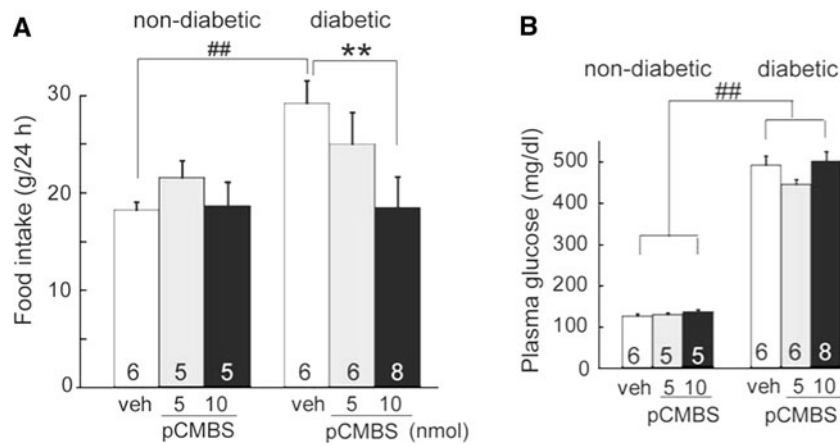


Fig. 1 Role of ketone bodies in diabetic hyperphagia. Effect of fourth-ventricle (4V) injection of *p*-chloromercuribenzen sulfonic acid (pCMBS), a monocarboxylate transporter 1 (MCT1) inhibitor, on food intake (a) and plasma glucose levels (b) in streptozotocin (STZ)-induced diabetic and in non-diabetic rats. pCMBS was injected at 10:30 h 8 days after STZ treatment. Food intake and plasma glucose levels were determined 24 h after 4V pCMBS injection. Statistical

differences were determined by two-way ANOVA (group and treatment) followed by the Bonferroni test. $**P < 0.01$, versus ultrapure water-treated controls. $##P < 0.01$, versus non-diabetic animals. Statistical differences in plasma glucose levels between groups are not shown. Numbers in each column represent the number of animals used. Values are means \pm SEM

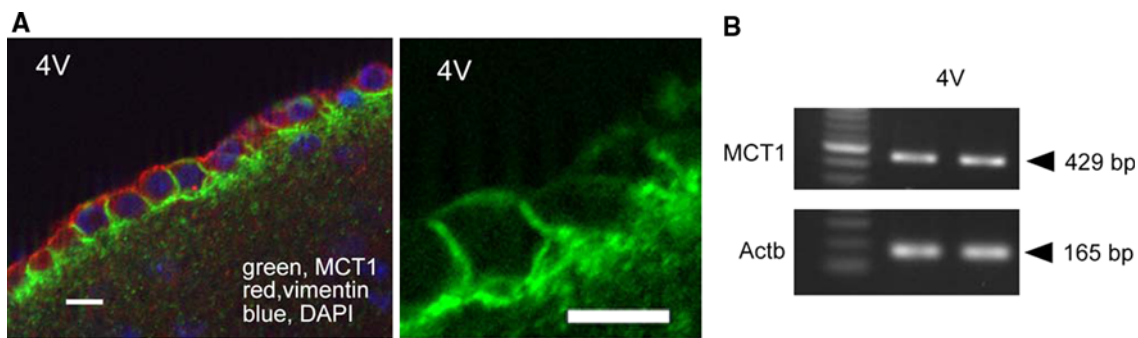


Fig. 2 Expression of MCT1 around the 4V. Immunofluorescence localization of MCT1 (a ketone body transporter, green), vimentin (an ependymocyte marker, red), and 4,6-diamidino-2-phenylindole (DAPI, cell nuclei, blue) around the 4V indicating the location of MCT1 in the ependymocytes in normal male rats (a). Scale bars

20 μ m. Mct1 (official symbol, Slc16a1) mRNA expression in the tissue around the 4V in normal male rats (b). The product size for the Mct1 primer was assumed to be 429 bp. Actb (165 bp) was used as an internal standard (color figure online)

Localization of MCT1 in ependymocytes

MCT1 immunoreactivity was found on cells immunopositive to vimentin, a marker of ependymocytes, around the 4V (Fig. 2a). MCT1 (official symbol, Slc16a1) mRNA was detected by RT-PCR in tissues containing ependymocytes around the 4V (Fig. 2b).

Correlation between CSF and plasma concentrations of energy substrates in diabetic and non-diabetic rats

The STZ-induced diabetic rat model exhibited ketosis and hyperphagia (Fig. 3a). In this model, food intake positively correlated with plasma levels of 3HB, a ketone body (Fig. 3a). CSF 3HB levels were significantly elevated in diabetic rats (0.27 ± 0.06) compared with non-diabetic controls ($0.08 \pm$

0.01 mmol/l , $P = 0.03$), and positively correlated with plasma 3HB levels (Fig. 3b). CSF glucose levels were significantly elevated in diabetic rats (149.3 ± 7.5) compared with non-diabetic rats ($74.3 \pm 3.5 \text{ mg/dl}$, $P = 0.000017$), and positively correlated with plasma glucose levels at a ratio of 0.3 ± 0.02 (Fig. 3c), as previously reported [39]. CSF NEFA levels were undetectable in both diabetic and non-diabetic animals, despite the higher plasma NEFA levels in diabetic rats (1.17 ± 0.2) compared with non-diabetic rats ($0.39 \pm 0.1 \text{ mEq/l}$, $P = 0.018$) (Fig. 3d).

Involvement of paraventricular catecholaminergic inputs in diabetic hyperphagia

When catecholamine release was blocked by microimplantation of the catecholamine synthesis inhibitor AMPT

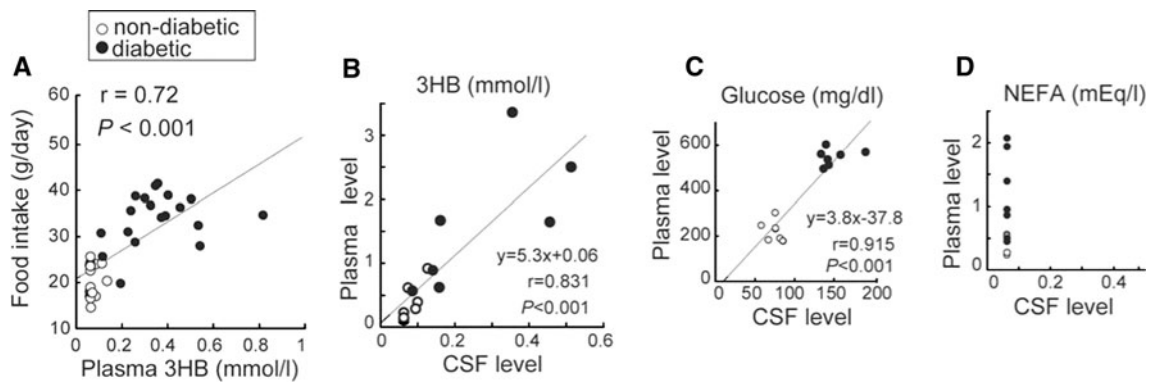


Fig. 3 Relationship between food intake and ketone body. Correlation between food intake and plasma 3HB levels in non-diabetic ($n = 16$) and diabetic ($n = 20$) rats (a). 24-hour food intake was measured, cerebrospinal fluid (CSF) or blood samples were obtained 7 or 8 days after STZ or vehicle treatment. Pearson's correlation

coefficient is shown. Correlation between CSF and plasma levels of 3-hydroxybutyrate (3HB) (b), glucose (c), or non-esterified fatty acids (NEFA) (d) in non-diabetic and diabetic rats ($n = 7$ for each group). Pearson's correlation coefficient is shown

into the bilateral PVN of diabetic rats, food intake was restored to normal levels by 6 days after AMPT treatment (Fig. 4a). Plasma 3HB was reduced by inhibiting PVN catecholamine synthesis (Fig. 4c). Body weight and plasma levels of glucose and NEFA were not significantly different in AMPT-implanted animals compared with vehicle-treated diabetic rats, and levels remained higher than those in non-diabetic controls (Fig. 4b, d, e).

Diabetic hyperphagia was cured by injection of MCT1 inhibitor (Fig. 1a), but hypothalamic mRNA levels of *AgRP* and *Npy* remained high even after pCMBS injection into the 4V (Fig. 4g).

Increase in food intake and PVN NE release induced by 4V 3HB injection

Injection of 3HB at 8 and 16 μmol into the 4V increased food intake in non-diabetic normal male rats (Fig. 5). In normal rats the 3HB-induced increase in food intake was blocked by inhibition of ketone body transport in the hindbrain by pCMBS (Fig. 5).

NE release in the PVN significantly increased 40 min after 4V 3HB injection in non-diabetic normal rats (Fig. 6a).

AgRP mRNA in the hypothalamic ARC was significantly increased by 3HB injection into the 4V. *Npy* mRNA levels in the ARC were not affected by the injection (Fig. 6c).

Energy substrate mobilization by 4V 3HB injection

4V 3HB injection increased plasma levels of glucose, 3HB, and NEFA (Fig. 7a–c). Plasma NE and epinephrine levels increased after the injection of 3HB into the 4V (Fig. 7d, e). Peripheral (i.v.) 3HB injection had no significant effect on plasma glucose, 3HB, and NEFA levels except for

transient 3HB increase just after the exogenous 3HB injection (Fig. 7f–h).

Discussion

This study revealed that ketone bodies act as a hunger signal to induce hyperphagia in a diabetic condition, because blockade of MCT1 ameliorated diabetic hyperphagia. Some metabolic products are believed to function as energy signals that are detected by brain energy sensors to control food intake [2]. Our results suggest that over-produced ketone bodies are sensed by the brain through MCT1, and thus would cause hyperphagia under a diabetic condition. Indeed, injection of 3HB into the hindbrain (4V) induced food intake, and shifted energy metabolism from glycolysis to fatty acid oxidation.

STZ-induced type 1 diabetes induced severe ketosis and hyperphagia. We showed that food intake positively correlated with plasma 3HB levels, which in turn positively correlated with CSF 3HB levels. This study showed that ependymocytes lining a wall of the 4V express MCT1. Collectively, the ketone body level in the CSF, which reflects plasma levels, seems to be sensed by hindbrain ependymocytes and to induce diabetic hyperphagia. It has been suggested a glucose sensor is located in hindbrain ependymocytes [17–21]. We speculate that ependymocytes also sense ketone body and then integrate energy information to control food intake. It is likely that pCMBS blocked MCT1 activity on the cell membrane of the ependymocytes, not on the mitochondria membrane, because pCMBS is a hydrophilic compound and may not pass the cell membrane [33]. In addition, pCMBS is believed to be a specific MCT1 inhibitor [33] and may not inhibit MCT2 activity, which is the predominant neuronal

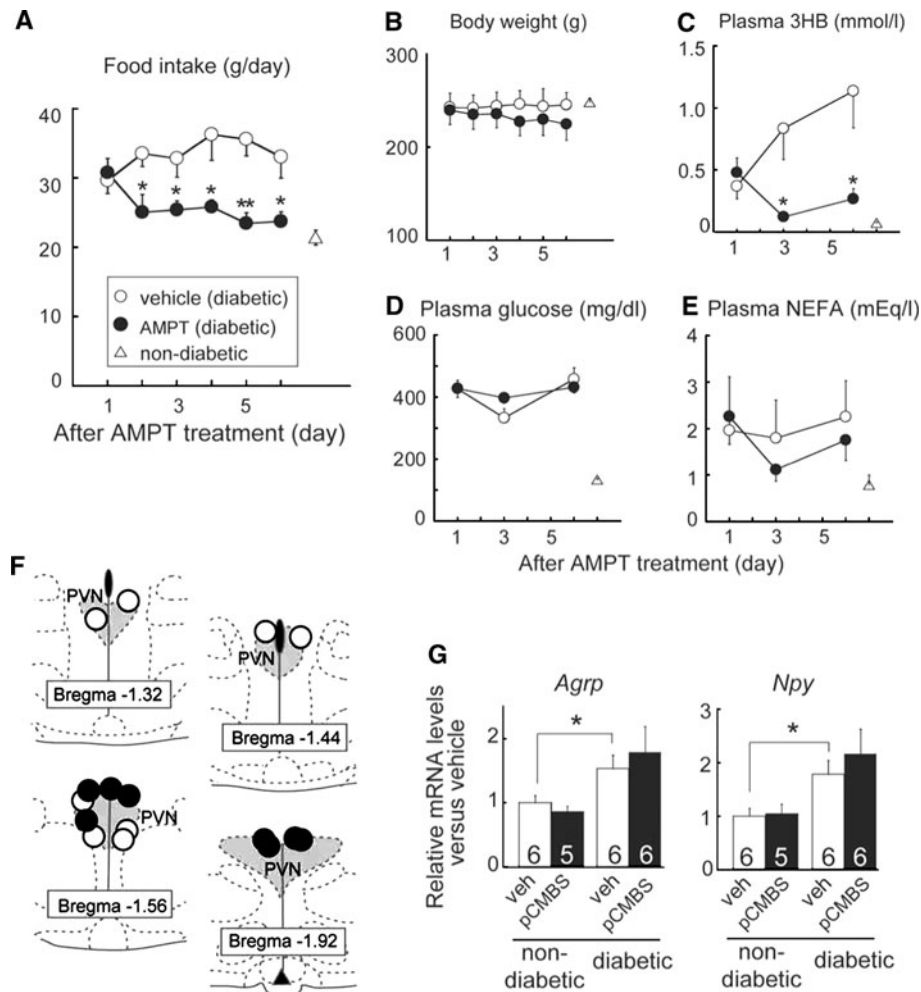


Fig. 4 Involvement of noradrenergic neurons in diabetic hyperphagia. Effect of bilateral alpha-methyl-*p*-tyrosine (AMPT), a catecholamine synthesis inhibitor, microimplants in the hypothalamic paraventricular nucleus (PVN) of STZ-induced diabetic rats on food intake (a), body weight (b), and plasma levels of 3HB (c), glucose (d), and NEFA (e) ($n = 4$ for each group). The open triangles show normal levels of 24-h food intake, body weight, and plasma metabolites for reference. Statistical differences were determined by two-way ANOVA (treatment and day) followed by the Bonferroni

test. $*P < 0.05$, $**P < 0.01$, versus vehicle-treated controls. Schematic drawings of the placement of the microimplants (f). Open and closed circles show vehicle-treated controls and AMPT-treated rats, respectively. mRNA levels of agouti-related protein (Agrp) and neuropeptide Y (Npy) in the arcuate nucleus (ARC) (g). ARC tissue samples were collected 3 h after injection of pCMBS or vehicle into the 4V. Statistical differences were determined by two-way ANOVA (group and treatment) followed by Student's *t* test. $*P < 0.05$, versus non-diabetic controls. Values are means \pm SEM

MCT [40]. Therefore, pCMBS might not inhibit neuronal uptake of ketone bodies but indeed inhibits uptake by ependymocytes.

There are still other possibilities for interpretation of the effect of pCMBS injection into the 4V on food intake in this study. The study does not exclude the possibility that the ependymocytes around the lateral ventricle (LV) or third ventricle (3 V) or some neurons are also a ketone body sensor in the brain. It has been reported that MCT1 is expressed in endothelial cells in the choroid plexus and ependymocytes around the LV and 3 V [41]. MCT1 expression increases in endothelial cells forming the blood–brain barrier under starvation [41]. Second, it is also possible that pCMBS might have blocked lactate uptake,

because MCT1 has also been reported to be involved in lactate transport [40]. There points remain to be clarified in the future studies.

This study suggests that ketone body-induced diabetic hyperphagia is mainly mediated by catecholaminergic inputs to the PVN, because the diabetic hyperphagia was attenuated to normal levels by PVN implants of AMPT, a catecholamine synthesis inhibitor. To our knowledge, this is the first evidence of a positive correlation between PVN catecholaminergic activation and diabetic hyperphagia. In fact, this study showed that injection of 3HB into the 4V increased NE release in the PVN. The involvement of PVN catecholaminergic inputs in feeding has been well documented. Injection of NE into the

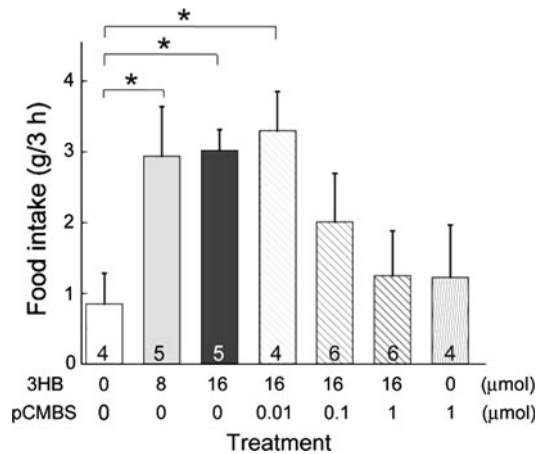


Fig. 5 Effects on food intake of 3HB injection into the 4V. Food intake for 3 h after 3HB injection with or without pCMBS, an MCT1 inhibitor, into the 4V in normal male rats. pCMBS was injected into the 4V immediately before the 4V 3HB administration at 13:00 h. Statistical difference determined by Fischer's PLSD test following one-way ANOVA. * $P < 0.05$, versus vehicle-treated controls. Numbers in each column represent the number of animals used. Values are means \pm SEM

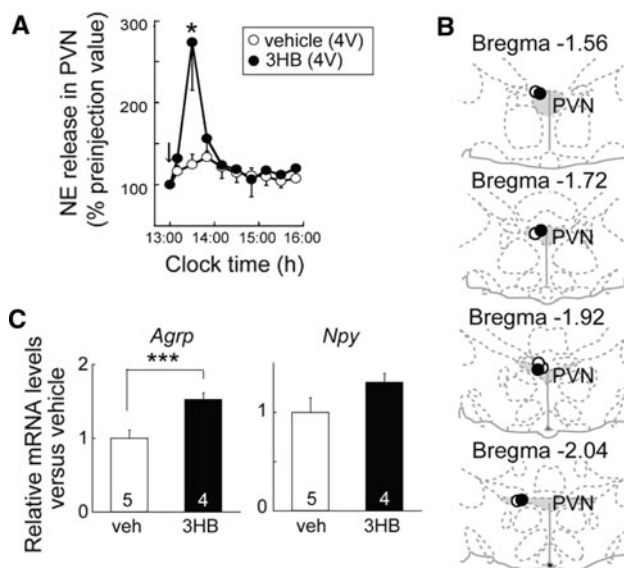


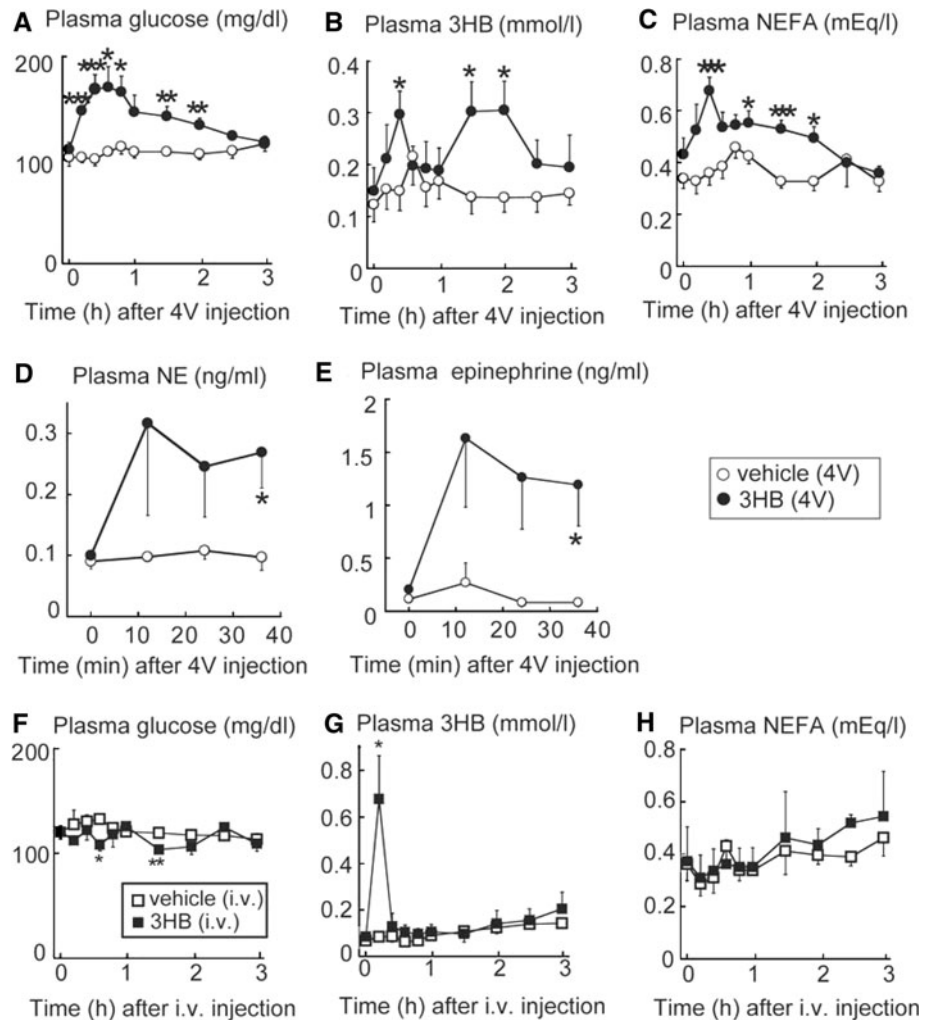
Fig. 6 Effect of 3HB in the 4V on norepinephrine (NE) release in the PVN and on hypothalamic orexigenic peptides. NE release in the hypothalamic PVN was determined by microdialysis and HPLC–ECD after injection of 3HB into the 4V of normal male rats (a) ($n = 4$ –5 per group). Schematic drawings of the placement of the tip end of the microdialysis probes (b). Open and closed circles show vehicle-treated controls and 3HB-treated rats, respectively. Statistical differences were determined by two-way ANOVA (treatment and clock time) followed by the Bonferroni test. * $P < 0.05$, versus vehicle-treated controls. Values are means \pm SEM. mRNA expression of *Agrp* and *Npy* in the hypothalamic ARC in male rats injected into the 4V with 3HB (16 μ mol) (c). ARC tissue samples were collected 3 h after 3HB injection into the 4V. Statistical differences were determined by use of the unpaired Student's *t* test. *** $P < 0.001$, versus vehicle-treated controls. Numbers in each column represent the number of animals used. Values are means \pm SEM

hypothalamic PVN potently elicits food intake in rats, and the PVN NE synthesis rate increases in 24-h fasting mice [37, 38]. NE stimulates feeding via the α 2-adrenergic receptor in the PVN in rats [42]. PVN NE-induced feeding is dependent on circulating corticosterone, and the PVN α 2-adrenergic receptor is up-regulated by corticosterone in rats [43, 44]. Because type 1 diabetes shows hypercorticism [45], the feeding response to NE via the PVN α 2 receptor may increase under diabetic conditions. The increase in PVN responsiveness to NE may be implicated in the pathogenesis of diabetic hyperphagia. We, however, do not actually know the area of diffusion of AMPT in this study and cannot exclude the possibility that areas other than the PVN are involved in the AMPT-induced decrease in food intake. It should be noted that the PVN AMPT implantation reduced plasma 3HB levels in diabetic rats. There is another possibility that normalized diabetic hyperphagia by AMPT implantation may be associated with the decrease in plasma 3HB levels. Future studies will be needed to address these points.

The ARC mRNA expression of orexigenic peptides, for example *Agrp* and *Npy*, was not altered by injection of an MCT1 inhibitor in diabetic rats, whereas injection of 3HB into the 4V increased *Agrp* expression in the ARC. The reason for the discrepancy is not clear, but ketone body-induced hyperphagia seems to be mediated mainly by noradrenergic inputs into the PVN, because AMPT implantation into the PVN normalized diabetic hyperphagia. NPY and *Agrp* are co-expressed in the ARC [46], and their expression is directly regulated by insulin and leptin [47, 48]. NPY and *Agrp* expression increased in STZ-induced diabetic rats, in which insulin deficiency and low leptin secretion are observed [29, 30]. These results suggest that ketone body injection alters NPY and *Agrp* expression by changing insulin and leptin tone in intact animals and that the diabetic ketosis may induce hyperphagia mainly by the noradrenergic pathway. The involvement of insulin/leptin-NPY/*Agrp* signaling in the hyperphagia remains to be determined.

Noradrenergic neurons projecting into the PVN mainly arise from the A1 and A2 regions of the solitary tract nucleus (NTS) and the A6 region of the locus coeruleus [49]. 2-Deoxy-D-glucose-induced glucoprivation has been reported to induce c-Fos expression in the NTS and A6 of rats. [13, 50, 51]. Catecholaminergic cell bodies in the A1 and C1 coexpressed NPY [49], and have been shown to be related to glucoprivic feeding [52]. Hence, signals from a ketone body sensor may be integrated in noradrenergic cell bodies in the A2 and/or A1/C1 and/or A6 regions to stimulate PVN NE release and feeding, although the neural pathway from the sensor to noradrenergic neurons is still unclear.

Fig. 7 Effects of 4V or i.v. 3HB injection on plasma metabolites and catecholamines. Changes in plasma levels of glucose (a), 3HB (b), NEFA (c), NE (d), and epinephrine (e) after 3HB injection into the 4V ($n = 4–6$ per group) at 13:00 h in normal male rats. Changes in plasma levels of glucose (f), 3HB (g), and NEFA (h) after intravenous 3HB (16 μ mol) injection ($n = 4–6$ per group) in normal male rats. Vehicle-treated controls were injected with artificial CSF. Statistical differences were determined by two-way ANOVA (treatment and time) followed by the Bonferroni test. * $P < 0.05$, ** $P < 0.01$, *** $P < 0.001$, versus vehicle-treated controls. Values are means \pm SEM



Ketone bodies have long been regarded as an anorectic signal, because a single peripheral 3HB injection reduces food intake in normal rats [22–24]. In contrast, this study showed that the ketone body is sensed by the brain to induce food intake, because diabetic hyperphagia was alleviated by inhibition of uptake of ketone bodies, and 3HB injection into the 4V induced food intake. The sub-cellular mechanism of ketone body sensing in brain energy sensors remains unknown. Ketone bodies have been known to inhibit glucose oxidation by inhibition of pyruvate dehydrogenase, which catalyzes oxidative decarboxylation of pyruvate in the mitochondria [53]. Pyruvate dehydrogenase activity is reduced in various tissues under fasting or diabetes, showing ketosis as the main symptom [54, 55]. Thus, inhibition of glucose oxidation by ketone body signaling in specific brain sensors may be a part of the mechanism for sensing ketone bodies and for integrating competing energy-related information.

This result is inconsistent with several previous reports on 3HB administration. Fisler et al. [23] showed that subcutaneous 3HB injection reduced food intake in dietary-fat-resistant

S 5B/P1 rats, but not in dietary-fat-sensitive Osborne–Mendel rats, through hepatic vagus nerve-independent pathways. On the other hand, Langhans et al. [56] showed that ketone body induces hypophagia via the vagal afferent system. Infusion of 3HB into the 3 V reduced feeding in Osborne–Mendel rats, but not S 5B/P1 rats [24]. Davis et al. [57] reported that infusion of 3HB into the 3 V did not reduce food intake. In some studies, 3HB was chronically infused into the cerebroventricle at a smaller dose, and others used acute peripheral injection [23]. In our study, the dose of 3HB acutely injected into the 4V in normal rats was based on plasma levels of ketone body in alloxan-induced diabetic rats [28]. The doses cannot simply be compared but our 3HB doses were rather higher than in the previous study with 3 V infusion [24]. Thus, the inconsistency of the effect of 3HB could be because of the different animal models, doses, or administration route and duration. Further studies will be required to address these points.

We propose here the hypothesis that increased ketone bodies in the brain contributed to diabetic hyperphagia. An increase in CSF ketone bodies activates a specific neural

pathway, noradrenergic inputs to the PVN, resulting in diabetic hyperphagia. Hindbrain energy sensors may integrate the information signals from CSF energy substrates, for example ketone bodies and glucose, and transmit the information via the noradrenergic pathway to control food intake. Our findings might be of therapeutic importance for eating disorders under a negative energy balance accompanied by ketosis.

Acknowledgments This work was supported by a Grant-in-Aid from the Ministry of Education, Culture, Sports, Science, and Technology (no. 18208025).

References

- Leedom LJ, Meehan WP (1989) The psychoneuroendocrinology of diabetes mellitus in rodents. *Psychoneuroendocrinology* 14:275–294
- Havel PJ (2001) Peripheral signals conveying metabolic information to the brain: short-term and long-term regulation of food intake and energy homeostasis. *Exp Biol Med* (Maywood) 226:963–977
- Schwartz MW, Woods SC, Porte D Jr, Seeley RJ, Baskin DG (2000) Central nervous system control of food intake. *Nature* 404:661–671
- Schwartz MW, Seeley RJ, Campfield LA, Burn P, Baskin DG (1996) Identification of targets of leptin action in rat hypothalamus. *J Clin Invest* 98:1101–1106
- van Houten M, Posner BI, Kopriwa BM, Brawer JR (1980) Insulin binding sites localized to nerve terminals in rat median eminence and arcuate nucleus. *Science* 207:1081–1083
- Sindelar DK, Havel PJ, Seeley RJ, Wilkinson CW, Woods SC, Schwartz MW (1999) Low plasma leptin levels contribute to diabetic hyperphagia in rats. *Diabetes* 48:1275–1280
- Sipols AJ, Baskin DG, Schwartz MW (1995) Effect of intracerebroventricular insulin infusion on diabetic hyperphagia and hypothalamic neuropeptide gene expression. *Diabetes* 44:147–151
- Miselis RR, Epstein AN (1975) Feeding induced by intracerebroventricular 2-deoxy-D-glucose in the rat. *Am J Physiol* 229:1438–1447
- Ritter S, Dinh TT, Zhang Y (2000) Localization of hindbrain glucoreceptive sites controlling food intake and blood glucose. *Brain Res* 856:37–47
- Levin BE, Dunn-Meynell AA, Routh VH (1999) Brain glucose sensing and body energy homeostasis: role in obesity and diabetes. *Am J Physiol* 276:R1223–R1231
- Mizuno TM, Makimura H, Silverstein J, Roberts JL, Lopingco T, Mobbs CV (1999) Fasting regulates hypothalamic neuropeptide Y, agouti-related peptide, and proopiomelanocortin in diabetic mice independent of changes in leptin or insulin. *Endocrinology* 140:4551–4557
- Ritter RC, Slusser PG, Stone S (1981) Glucoreceptors controlling feeding and blood glucose: location in the hindbrain. *Science* 213:451–452
- Briski KP, Marshall ES (2000) Caudal brainstem Fos expression is restricted to periventricular catecholamine neuron-containing loci following intraventricular administration of 2-deoxy-D-glucose. *Exp Brain Res* 133:547–551
- Anand BK, Chhina GS, Sharma KN, Dua S, Singh B (1964) Activity of single neurons in the hypothalamic feeding centers: effect of glucose. *Am J Physiol* 207:1146–1154
- Levin BE (2006) Metabolic sensing neurons and the control of energy homeostasis. *Physiol Behav* 89:486–489
- Oomura Y, Kimura K, Ooyama H, Maeno T, Iki M, Kuniyoshi M (1964) Reciprocal activities of the ventromedial and lateral hypothalamic areas of cats. *Science* 143:484–485
- Hanai K, Oomura Y, Kai Y, Nishikawa K, Shimizu N, Morita H, Plata-Salaman CR (1989) Central action of acidic fibroblast growth factor in feeding regulation. *Am J Physiol* 256:R217–R223
- Matsuo A, Tooyama I, Isobe S, Oomura Y, Akiguchi I, Hanai K, Kimura J, Kimura H (1994) Immunohistochemical localization in the rat brain of an epitope corresponding to the fibroblast growth factor receptor-1. *Neuroscience* 60:49–66
- Oomura Y, Sasaki K, Suzuki K, Muto T, Li AJ, Ogita Z, Hanai K, Tooyama I, Kimura H, Yanaihara N (1992) A new brain glucosensor and its physiological significance. *Am J Clin Nutr* 55:278S–282S
- Maekawa F, Toyoda Y, Torii N, Miwa I, Thompson RC, Foster DL, Tsukahara S, Tsukamura H, Maeda K (2000) Localization of glucokinase-like immunoreactivity in the rat lower brain stem: for possible location of brain glucose-sensing mechanisms. *Endocrinology* 141:375–384
- Moriyama R, Tsukamura H, Kinoshita M, Okazaki H, Kato Y, Maeda K (2004) In vitro increase in intracellular calcium concentrations induced by low or high extracellular glucose levels in ependymocytes and serotonergic neurons of the rat lower brainstem. *Endocrinology* 145:2507–2515
- Langhans W, Wiesenreiter F, Scharrer E (1983) Different effects of subcutaneous D, L-3-hydroxybutyrate and acetoacetate injections on food intake in rats. *Physiol Behav* 31:483–486
- Fisler JS, Egawa M, Bray GA (1995) Peripheral 3-hydroxybutyrate and food intake in a model of dietary-fat induced obesity: effect of vagotomy. *Physiol Behav* 58:1–7
- Arase K, Fisler JS, Shargill NS, York DA, Bray GA (1988) Intracerebroventricular infusions of 3-OHB and insulin in a rat model of dietary obesity. *Am J Physiol* 255:R974–R981
- Fekete C, Singru PS, Sanchez E, Sarkar S, Christoffolete MA, Riberio RS, Rand WM, Emerson CH, Bianco AC, Lechan RM (2006) Differential effects of central leptin, insulin, or glucose administration during fasting on the hypothalamic–pituitary–thyroid axis and feeding-related neurons in the arcuate nucleus. *Endocrinology* 147:520–529
- Nagy I, Nemeth J, Laszik Z (2000) Effect of L-aminocarnitine, an inhibitor of mitochondrial fatty acid oxidation, on the exocrine pancreas and liver in fasted rats. *Pharmacol Res* 41:9–17
- Greenstein RJ, Isola L, Gordon J (1990) Differential cholecystokinin gene expression in brain and gut of the fasted rat. *Am J Med Sci* 299:32–37
- Meier JM, McGarry JD, Faloon GR, Unger RH, Foster DW (1972) Studies of the development of diabetic ketosis in the rat. *J Lipid Res* 13:228–233
- Qu SY, Yang YK, Li JY, Zeng Q, Gantz I (2001) Agouti-related protein is a mediator of diabetic hyperphagia. *Regul Pept* 98:69–75
- Sahu A, Sninsky CA, Phelps CP, Dube MG, Kalra PS, Kalra SP (1992) Neuropeptide Y release from the paraventricular nucleus increases in association with hyperphagia in streptozotocin-induced diabetic rats. *Endocrinology* 131:2979–2985
- Cheng H, Isoda F, Belsham DD, Mobbs CV (2008) Inhibition of agouti-related peptide expression by glucose in a clonal hypothalamic neuronal cell line is mediated by glycolysis, not oxidative phosphorylation. *Endocrinology* 149:703–710
- Paxinos G, Watson C (2007) *The rat brain in stereotaxic coordinates*, 6th edn. Academic Press, San Diego
- Broer S, Broer A, Schneider HP, Stegen C, Halestrap AP, Deitmer JW (1999) Characterization of the high-affinity monocarboxylate

- transporter MCT2 in *Xenopus laevis* oocytes. *Biochem J* 341(Pt 3): 529–535
34. Manning Fox JE, Meredith D, Halestrap AP (2000) Characterisation of human monocarboxylate transporter 4 substantiates its role in lactic acid efflux from skeletal muscle. *J Physiol* 529(Pt 2): 285–293
 35. Matsuyama S, Ohkura S, Iwata K, Uenoyama Y, Tsukamura H, Maeda K, Kimura K (2009) Food deprivation induces monocarboxylate transporter 2 expression in the brainstem of female rat. *J Reprod Dev* 55:256–261
 36. Sajapitak S, Iwata K, Shahab M, Uenoyama Y, Yamada S, Kinoshita M, Bari FY, I'Anson H, Tsukamura H, Maeda K (2008) Central lipoprivation-induced suppression of luteinizing hormone pulses is mediated by paraventricular catecholaminergic inputs in female rats. *Endocrinology* 149:3016–3024
 37. Leibowitz SF (1978) Paraventricular nucleus: a primary site mediating adrenergic stimulation of feeding and drinking. *Pharmacol Biochem Behav* 8:163–175
 38. Marriage BJ, Johnston JL (1989) Hypothalamic norepinephrine synthesis rate in overfed, underfed and fasted mice. *Pharmacol Biochem Behav* 32:101–110
 39. Jacob RJ, Fan X, Evans ML, Dziura J, Sherwin RS (2002) Brain glucose levels are elevated in chronically hyperglycemic diabetic rats: no evidence for protective adaptation by the blood brain barrier. *Metabolism* 51:1522–1524
 40. Pierre K, Pellerin L (2005) Monocarboxylate transporters in the central nervous system: distribution, regulation and function. *J Neurochem* 94:1–14
 41. Castro MA, Beltran FA, Brauchi S, Concha II (2009) A metabolic switch in brain: glucose and lactate metabolism modulation by ascorbic acid. *J Neurochem* 110:423–440
 42. Fletcher PJ, Paterson IA (1989) M-octopamine injected into the paraventricular nucleus induces eating in rats: a comparison with noradrenaline-induced eating. *Br J Pharmacol* 97:483–489
 43. Leibowitz SF, Roland CR, Hor L, Squillari V (1984) Noradrenergic feeding elicited via the paraventricular nucleus is dependent upon circulating corticosterone. *Physiol Behav* 32:857–864
 44. Jhanwar-Uniyal M, Leibowitz SF (1986) Impact of circulating corticosterone on alpha 1- and alpha 2-noradrenergic receptors in discrete brain areas. *Brain Res* 368:404–408
 45. Revsin Y, van Wijk D, Saravia FE, Oitzl MS, De Nicola AF, de Kloet ER (2008) Adrenal hypersensitivity precedes chronic hypercorticism in streptozotocin-induced diabetes mice. *Endocrinology* 149:3531–3539
 46. Hahn TM, Breininger JF, Baskin DG, Schwartz MW (1998) Coexpression of AgRP and NPY in fasting-activated hypothalamic neurons. *Nat Neurosci* 1:271–272
 47. Mayer CM, Belsham DD (2009) Insulin directly regulates NPY and AgRP gene expression via the MAPK MEK/ERK signal transduction pathway in mHypoE-46 hypothalamic neurons. *Mol Cell Endocrinol* 307:99–108
 48. Xu AW, Kaelin CB, Takeda K, Akira S, Schwartz MW, Barsh GS (2005) PI3K integrates the action of insulin and leptin on hypothalamic neurons. *J Clin Invest* 115:951–958
 49. Sawchenko PE, Swanson LW, Grzanna R, Howe PR, Bloom SR, Polak JM (1985) Colocalization of neuropeptide Y immunoreactivity in brainstem catecholaminergic neurons that project to the paraventricular nucleus of the hypothalamus. *J Comp Neurol* 241:138–153
 50. Ritter S, Llewellyn-Smith I, Dinh TT (1998) Subgroups of hindbrain catecholamine neurons are selectively activated by 2-deoxy-D-glucose induced metabolic challenge. *Brain Res* 805:41–54
 51. Moriyama R, Reyes BA, Tsukamura H, Maeda K (2003) Glucoprivation-induced Fos expression in the hypothalamus and medulla oblongata in female rats. *J Reprod Dev* 49:151–157
 52. Li AJ, Wang Q, Dinh TT, Ritter S (2009) Simultaneous silencing of Npy and Dbh expression in hindbrain A1/C1 catecholamine cells suppresses glucoprivic feeding. *J Neurosci* 29:280–287
 53. Lajtha A, Gibson GE, Diemel GA (2007) Handbook of neurochemistry and molecular neurobiology: brain energetics. Integration of molecular and cellular processes, 3rd edn. Springer, Heidelberg
 54. Rinaudo MT, Curto M, Bruno R (1986) Effect of insulin on pyruvate dehydrogenase in a mixture of plasma membranes and mitochondria from normal and alloxan treated rat brains. *Int J Biochem* 18:603–607
 55. Spriet LL, Tunstall RJ, Watt MJ, Mehan KA, Hargreaves M, Cameron-Smith D (2004) Pyruvate dehydrogenase activation and kinase expression in human skeletal muscle during fasting. *J Appl Physiol* 96:2082–2087
 56. Langhans W, Egli G, Scharrer E (1985) Selective hepatic vagotomy eliminates the hypophagic effect of different metabolites. *J Auton Nerv Syst* 13:255–262
 57. Davis JD, Wirtshafter D, Asin KE, Brief D (1981) Sustained intracerebroventricular infusion of brain fuels reduces body weight and food intake in rats. *Science* 212:81–83